

What does FOGO mean?

FOGO stands for Food Organics, Garden Organics and refers to the weekly collection of food scraps, as well as natural material from your garden. A handy way to think about FOGO is 'If it didn't grow, it's not FOGO'.

Why are we changing to a new bin system?

The 3-bin Food Organics, Garden Organics (FOGO) system will provide residents with more options for separating their waste at the source, with the aim of improving recovery rates, increasing diversion from landfill and reducing costs of processing material.

Your household will be moving to three separate bins: one for General Waste, a FOGO bin for compost and a Recycling bin.

By collecting nutrient-rich food waste alongside garden waste in the new FOGO bin, we can generate a high-quality compost to use on farms, parks and gardens and avoid organic waste going to landfill to produce harmful greenhouse gases.

The system has been successfully trialled in the City of Melville as part of a joint project between the Southern Metropolitan Regional Council, Cities of Fremantle and Melville and the Town of East Fremantle.

During this trial, the three-bin FOGO system was proven to achieve around 65% diversion from landfill. The process prevented valuable resources from going to landfill and was accompanied by strong participation and support from residents.

The 3-bin FOGO system is the WA Waste Authority's preferred kerbside collection system as it is considered the most suitable for achieving the State Government target of 65% diversion from landfill by 2020.

When will this occur?

The change is scheduled to take place from July 1 2019. The rollout will take around a week. If you have any questions please call on **P (08) 9339 9339**

NEW FOGO (3 BIN SYSTEM)



Will there be an additional cost for my household?

There will be no additional costs to residents for the FOGO service.

What will be happening to my bin service?

With the introduction of FOGO, your household will have three separate bins: one for General Waste, a FOGO bin for compost and a Recycling bin.

You will receive a 240 litre FOGO bin, for all your food scraps and garden clippings, which will be turned into high-quality compost and collected **weekly**.

You will also be provided with a kitchen caddy that will be attached to your lime-green topped FOGO bin along with special compostable liners which will help you separate your food scraps in the kitchen. Inside the kitchen caddy will be all the information you need to help figure out how to use your new bins as well as the compostable liners.

You will keep your Recycling bin; however, it will now be collected **fortnightly** instead of weekly.

You will receive a new 140 litre General Waste bin for waste that can't be recycled or turned into compost, which will be sent to landfill and collected on the alternative **fortnight** to your yellow-topped recycling bin.

Your old General Waste Bin will be taken away, reused or recycled into a new bin.

What can I put in each bin?

FOGO bin:

All food organics including raw and cooked meat, bread, dairy, bones and shells and garden organics. This bin will be composted so it's important to keep **plastic** and **glass** out of this bin.

All food waste should be placed in your FOGO bin in a compostable liner, wrapped up in newspaper or loose in the bin. Please make sure that all food is removed from packaging before being placed in the bin as it can't be separated during sorting.

You can also place pet droppings and kitty litter into this bin either straight into the bin or in a compostable liner, however no plastic bags of any kind can go into your FOGO bin.

Recycling bin:

Recyclable materials such as paper, cardboard, aluminium and steel cans, glass and plastic containers.

General Waste bin:

Items that cannot be composted or recycled, such as nappies, non-recyclable packaging and other general rubbish items.

There be changes to the bin collection service?
The FOGO bin will be collected **weekly** while your General Waste bin and Recycling bin being collected on **opposite weeks**.

Which Bins go out each week?

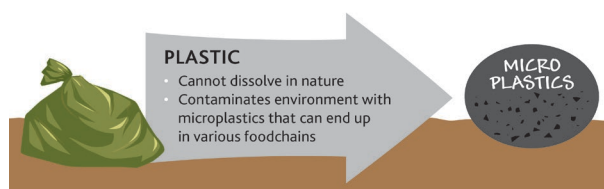
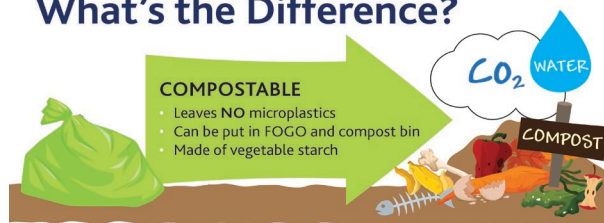


Why do I need to use only compostable liners in my FOGO bin?

Your new FOGO bin will be composted so it's important to keep plastic and glass out of this bin. All food waste is to go into your FOGO bin either in a compostable liner, wrapped in newspaper or loose in the bin. Please make sure food is removed from packaging before being placed in the bin as any plastic packaging can contaminate the compost.

You can also place pet droppings and all kitty litter into this bin either straight into the bin or in a compostable liner, however **biodegradable plastic liners are not** to go into your FOGO bin, only compostable liners as they will break down naturally in the composting process.

What's the Difference?



Compostable liners:

These bags are made from plant starch, which means they can break down into organic materials and aid the composting process.

Degradable (OXO) and Plastic bags - don't use these in your FOGO bin:

Degradable (OXO) and plastic bags do not break down into organic material. Instead these bags break down into micro plastic which contaminate the compost.

Factsheet No.2
Date: 24/05/2019