



00

91-93 CANNING HIGHWAY EAST FREMANTLE

landscape concept



# CONTENTS

01 CONTEXT & SITE ANALYSIS

02 CONCEPT IMAGERY

03 LANDSCAPE CONCEPT

04 PLANTING PALETTE

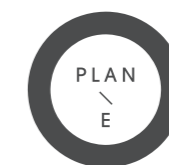
05 DEEP SOIL & TREE CANOPY PROVISION COMPLIANCE

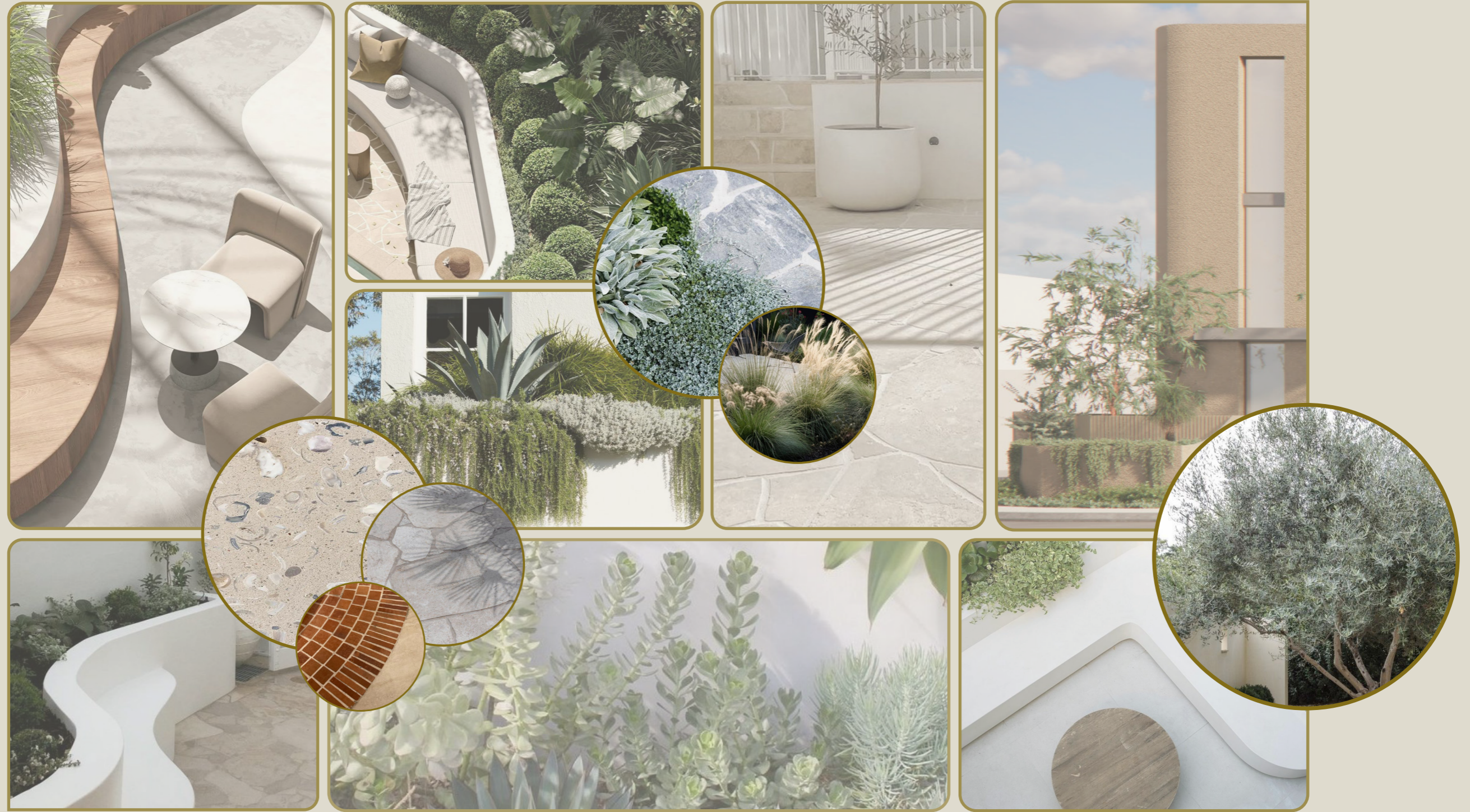


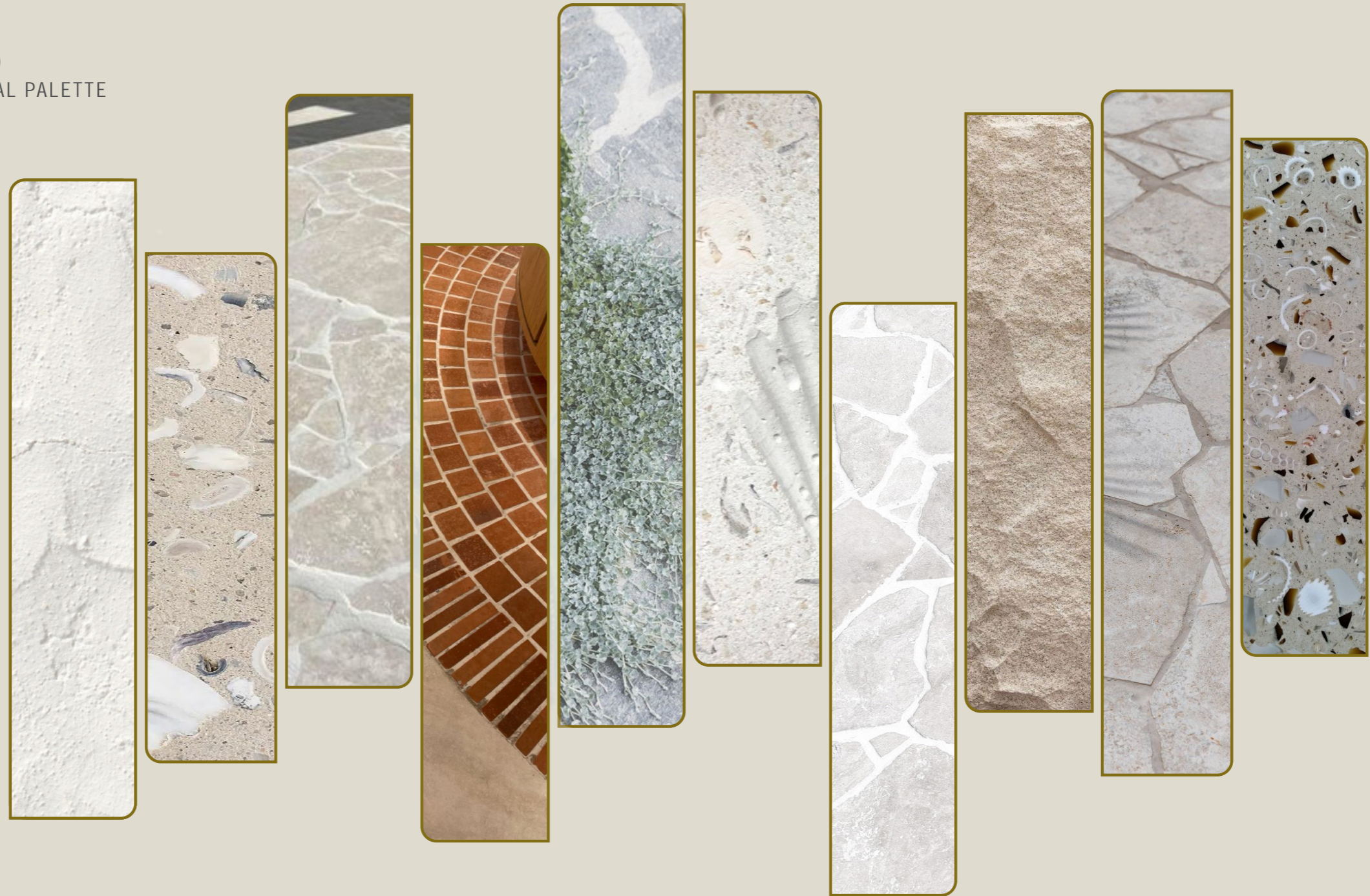
91–93 Canning Highway is located in East Fremantle, within the suburb of Fremantle.

The site is close to the Swan River shoreline and has convenient access to Stirling Bridge, situated directly beside Stirling Highway and at the intersection of Canning Highway and Sewell Street.

It is also located near the train line, with the Fremantle Train Station easily reached via a short commute along the river. Key public amenities nearby include the Fremantle city centre, offering a wide range of cafés, restaurants, shops and grocery stores. A variety of local cafés, eateries and public parks are also within walking distance of the site in East Fremantle.







COLOR RANGE

COLOR COMBINATION TYPE 1

COLOR COMBINATION TYPE 2

COLOR COMBINATION TYPE 3

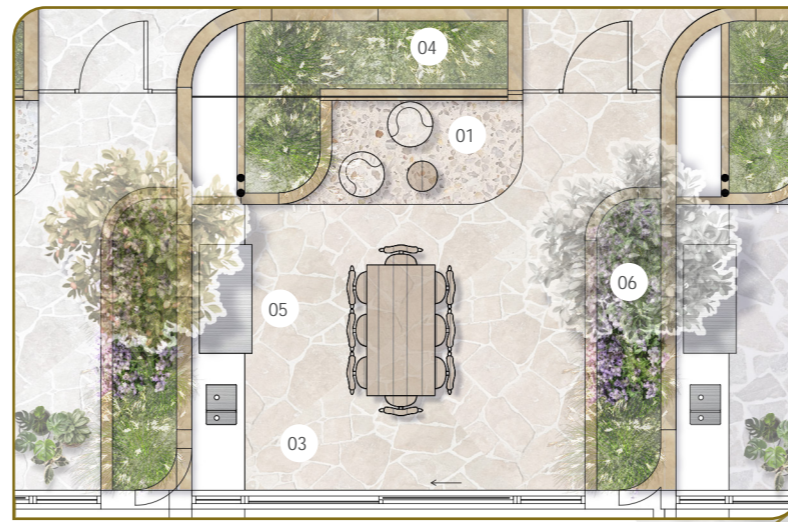


EXPOSED AGGREGATE WITH SHELL GRID



# 03

## CONCEPT PLAN GROUND FLOOR



ZOOM-IN ON COURTYARD - SHOWING THE CONTRAST IN DIFFERENT PAVING TYPES, COLORS AND FRUIT TREES.

### LEGEND

- 01 EXPOSED AGGREGATE CONCRETE WITH SHELL GRID IN THREE DIFFERENT SPECIFIED SHADES - VARIED BETWEEN THE UNITS
- 02 RED GRANITE "WELCOME MATT" PAVING TO MATCH FEATURE FACADE
- 03 RANDOM-SET STONE PAVING IN THREE DIFFERENT SPECIFIED SHADES - VARIED BETWEEN THE UNITS
- 04 WA NATIVE PLANT SPECIES TO NORTHERN INTERFACE
- 05 BBQ AREA WITH OPEN SPACE FOR FLEXIBLE DINING & SEATING OPTIONS
- 06 PLANTER WITH SPACE FOR HERBAL GARDENING & FRUITING TREES, VARIED SPECIES BETWEEN THE UNITS, E.G CITRUS LEMON, CITRUS ORANGE.
- 07 ENTRY COURTYARD WITH STAIRS TO ENTRANCE WITH PLATFORM FOR FLEXIBLE LOUNGE FURNITURE & POTS
- 08 LEVEL ENTRY COURTYARD WITH SPACE FOR FLEXIBLE LOUNGE FURNITURE & POTS
- 09 WA NATIVE TREE AND PLANTING SPECIES IN GARDEN BED NEXT TO ENTRY GATE E.G HAKEA LAURINA
- 10 SPACE FOR CLOTHESLINE AGAINST WALL

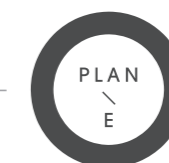
91-93 CANNING HIGHWAY, EAST FREMANTLE  
PREPARED FOR RAD ARCHITECTS

LANDSCAPE CONCEPT  
FEBRUARY 2026

JOB NO. 2513501 C1.106  
1:200 @ A3

REV C

COPYRIGHT THIS DOCUMENT IS AND  
SHALL REMAIN THE PROPERTY OF  
PLAN E

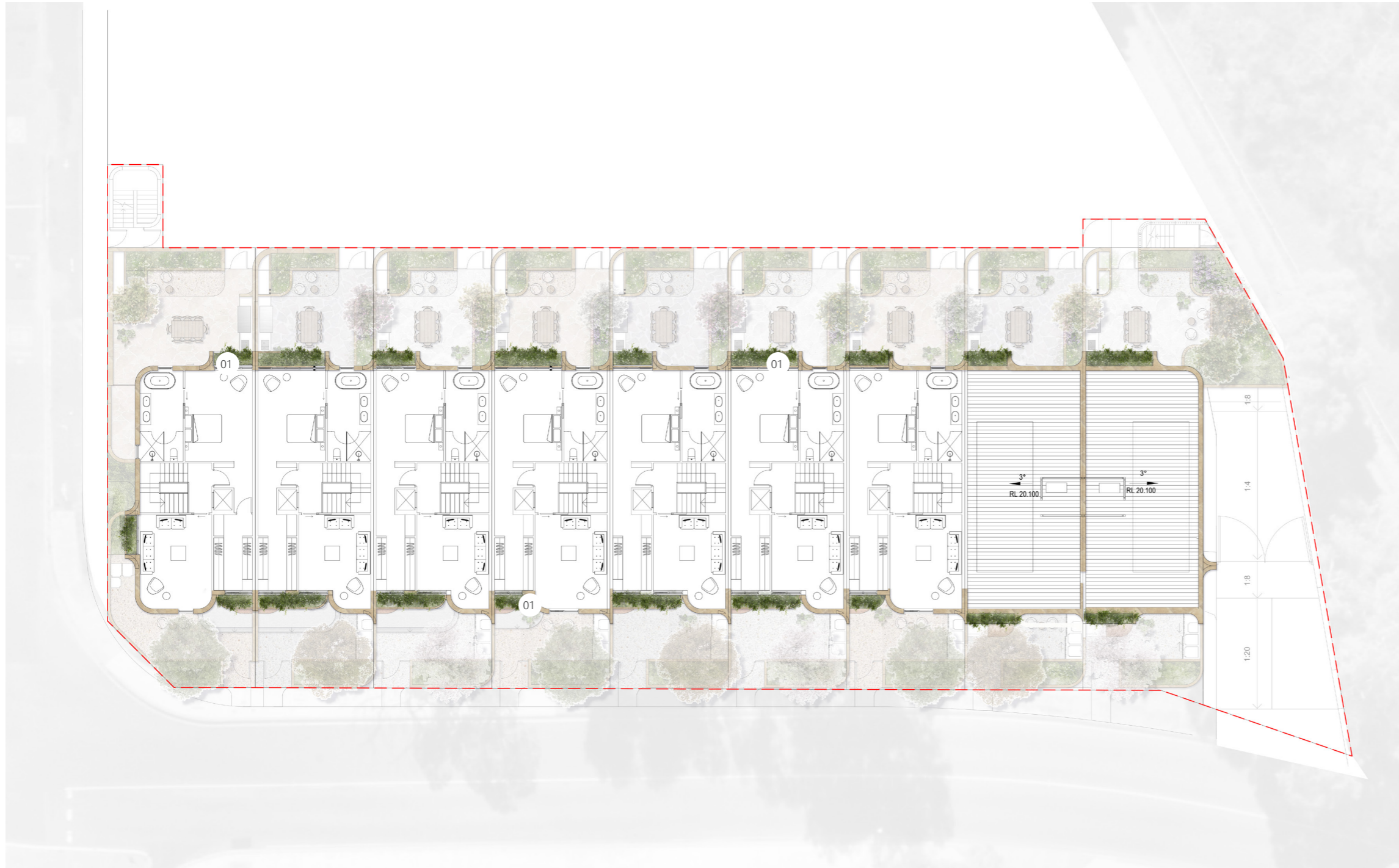


LANDSCAPE ARCHITECTS

LEVEL 1 278 RAILWAY PARADE WEST LEEDERVILLE 6007  
T: (08) 9388 9566 E: mail@plane.com.au

# 03

## CONCEPT PLAN LEVEL 02



### LEGEND

01 PROPOSED FEATURE PLANTING WITH  
CREEPERS (E.G. CASUARINA 'COUSIN  
IT') HANGING FROM BALCONY PLANTER



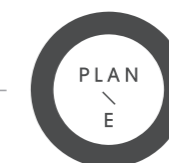
91-93 CANNING HIGHWAY, EAST FREMANTLE  
PREPARED FOR RAD ARCHITECTS

LANDSCAPE CONCEPT  
FEBRUARY 2026

JOB NO. 2513501 C1.107  
1:200 @ A3

REV C

COPYRIGHT THIS DOCUMENT IS AND  
SHALL REMAIN THE PROPERTY OF  
PLAN E



LANDSCAPE ARCHITECTS

LEVEL 1 278 RAILWAY PARADE WEST LEEDERVILLE 6007  
T: (08) 9388 9566 E: mail@plane.com.au



BASED ON A SITE AREA OF: **1573 SQ.M**

REQUIRED SOFT LANDSCAPE AREA - TOTAL LOT (15%): **236 SQ.M** PROVIDED SOFT LANDSCAPE AREA: **192.1 SQ.M**

REQUIRED TREE QUANTITY: **2 SMALL TREES PER STRATA LOT (18 SMALL TREES)** PROVIDED TREE QUANTITY: **20 SMALL TREES**

### SOFT LANDSCAPE AREA

THE DEVELOPMENT SEEKS TO EXCEED THE REQUIRED LANDSCAPE PROVISION FOR SOFT LANDSCAPE AREAS AS DEFINED IN THE WESTERN AUSTRALIA PLANNING COMMISSION (WAPC) RESIDENTIAL DESIGN CODES - VOLUME 1, THROUGH GENEROUSLY SCALED LANDSCAPE AREAS.

THE TABLE BELOW OUTLINES MINIMUM REQUIREMENTS FOR SOFT LANDSCAPE AREAS AS DEFINED IN THE R CODES VOLUME 1.

PROPOSED LOT	STRATA LOT SIZE	MINIMUM REQUIREMENTS -15% OF EACH STRATA LOT	PROVIDED REQUIREMENT - GROUND FLOOR	PROVIDED REQUIREMENT - L2	TOTAL SOFT LANDSCAPE AREA
T01	184 SQ.M	27.9 SQ.M	19 SQ.M	3.6 SQ.M	22.9 SQ.M
T02	152 SQ.M	23.6 SQ.M	12.5 SQ.M	4.9 SQ.M	18.2 SQ.M
T03	153 SQ.M	23.7 SQ.M	12.5 SQ.M	3.7 SQ.M	17 SQ.M
T04	153 SQ.M	23.7 SQ.M	12.5 SQ.M	3.7 SQ.M	17 SQ.M
T05	153 SQ.M	23.7 SQ.M	12.5 SQ.M	3.7 SQ.M	17 SQ.M
T06	153 SQ.M	23.7 SQ.M	12.5 SQ.M	4.9 SQ.M	18.2 SQ.M
T07	153 SQ.M	23.7 SQ.M	12.5 SQ.M	2.7 SQ.M	16 SQ.M
T08	153 SQ.M	23.7 SQ.M	13.4 SQ.M	3 SQ.M	17.2 SQ.M
T09	183 SQ.M	26.8 SQ.M	34 SQ.M	4.2 SQ.M	38.2 SQ.M
COMMON SPACES	-	-	19.8 SQ.M	-	19.8 SQ.M
TOTAL	1573 SQ.M	236 SQ.M	157.7 SQ.M	34.4 SQ.M	192.1 SQ.M

### TREE REQUIREMENTS

THE DEVELOPMENT SEEKS TO PROVIDE SUFFICIENT NUMBER OF TREES THROUGH ALL LEVELS OF LANDSCAPE, INCLUDING EXTERNAL LANDSCAPE SPACES.

THE TABLE BELOW OUTLINES MINIMUM REQUIREMENTS FOR TREE QUANTITY AS DEFINED IN DESIGNWA.

	LOT SIZE	MINIMUM TREE REQUIREMENTS	PROVIDED REQUIREMENT
PROPOSED TOTAL LOT	> 1000 SQ.M	2 SMALL TREES PER EACH STRATA LOT [9 LOTS - 18 SMALL TREES]	20 SMALL TREES

### IRRIGATION REQUIREMENTS

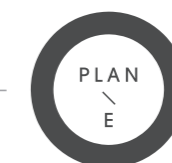
A FULLY AUTOMATIC IRRIGATION SYSTEM WILL BE INSTALLED FOR 91-93 CANNING HIGHWAY PROJECT. THE SCOPE WILL INCLUDE:

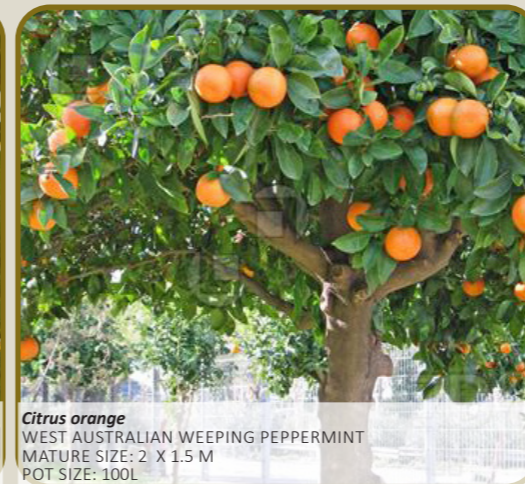
- IRRIGATION TO ALL LANDSCAPE AREAS
- MOISTURE SENSORS THROUGHOUT, TO ENSURE WATER USE IS MINIMISED
- USE OF LOW WATER USE EMITTERS TO ENSURE ONLY SUFFICIENT WATER IS PROVIDED TO IRRIGATE PLANTING AREAS
- IN-LINE FERTILISATION UNIT TO ENSURE FERTILISING AND MOISTURE RETENTION IS CONTROLLED
- USE OF POP - UP FLOOD BUBBLERS TO SUIT SIZE OF GARDEN BEDS TO ENSURE ANY OVER-SPRAY AND WASTAGE IS MITIGATED, AND;
- A DETAILED DESIGN AND SPECIFICATION WILL BE PROVIDED AT BUILDING LICENSE APPLICATION STAGE.



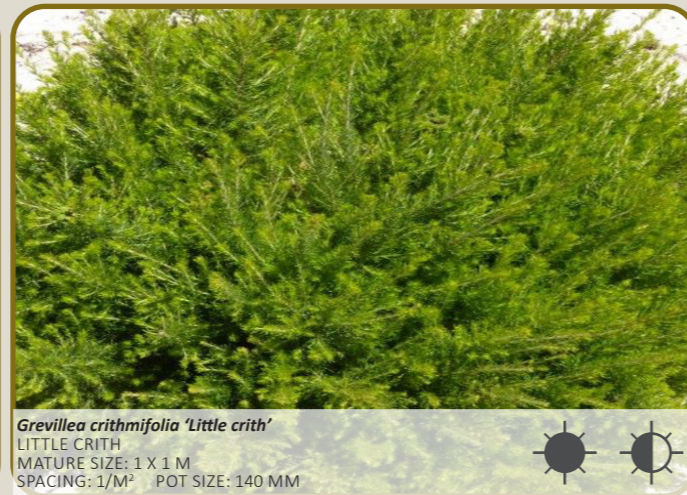
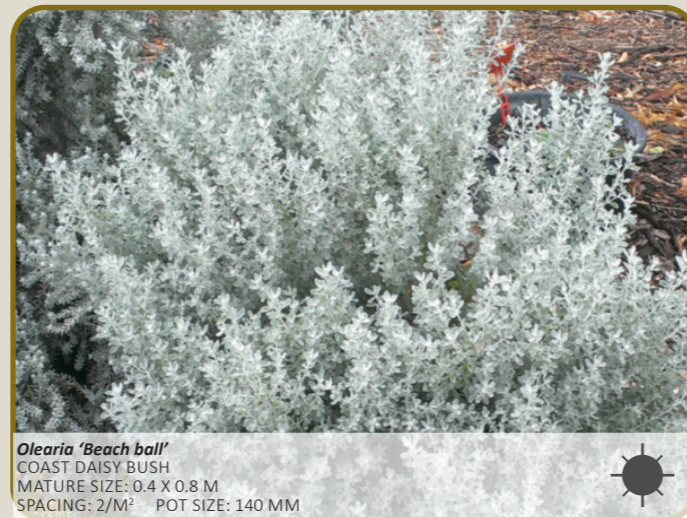
LEGEND

- LOT BOUNDARIES
- IN GROUND - SOFT LANDSCAPE AREA [RESIDENTIAL LOTS]
- IN GROUND - SOFT LANDSCAPE AREA [COMMON SPACES]
- SMALL TREES - 4M DIAMETER MIN



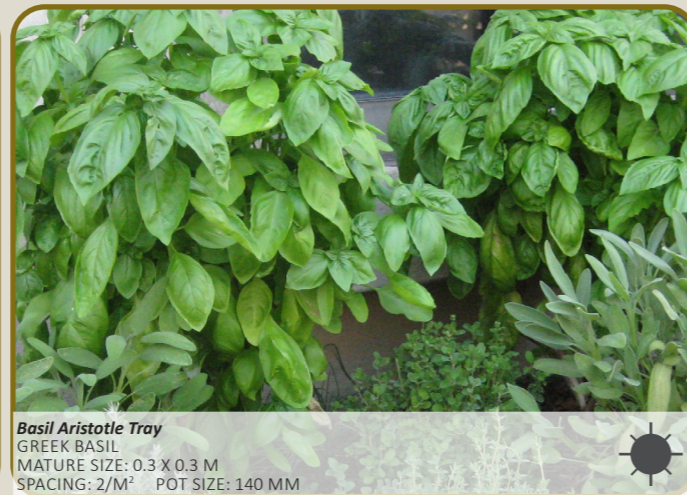


WA NATIVE PLANTS





HERBAL GARDEN PLANTS





LANDSCAPE ARCHITECTS

LEVEL 1 278 RAILWAY PDE WEST LEEDERVILLE WA 6007  
T: (08) 9388 9566 E: mail@plane.com.au

EAST FREMANTLE TOWNHOUSES STAGE 1

FEBRUARY 2026

2513501 EAST FREMANTLE TOWNHOUSE STAGE 1

PLAN E