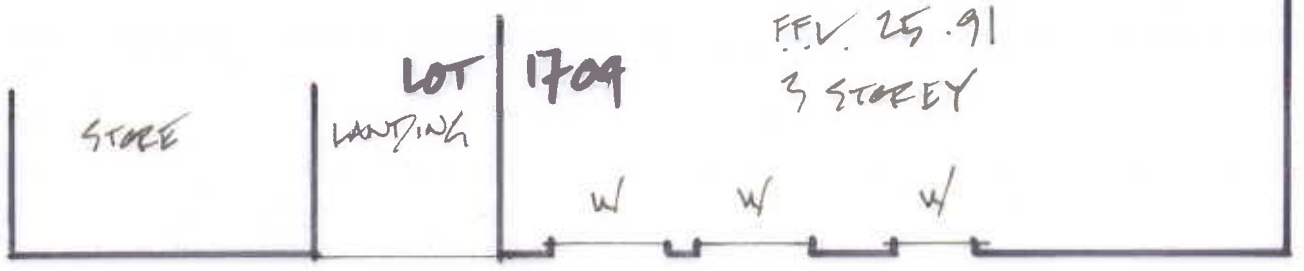
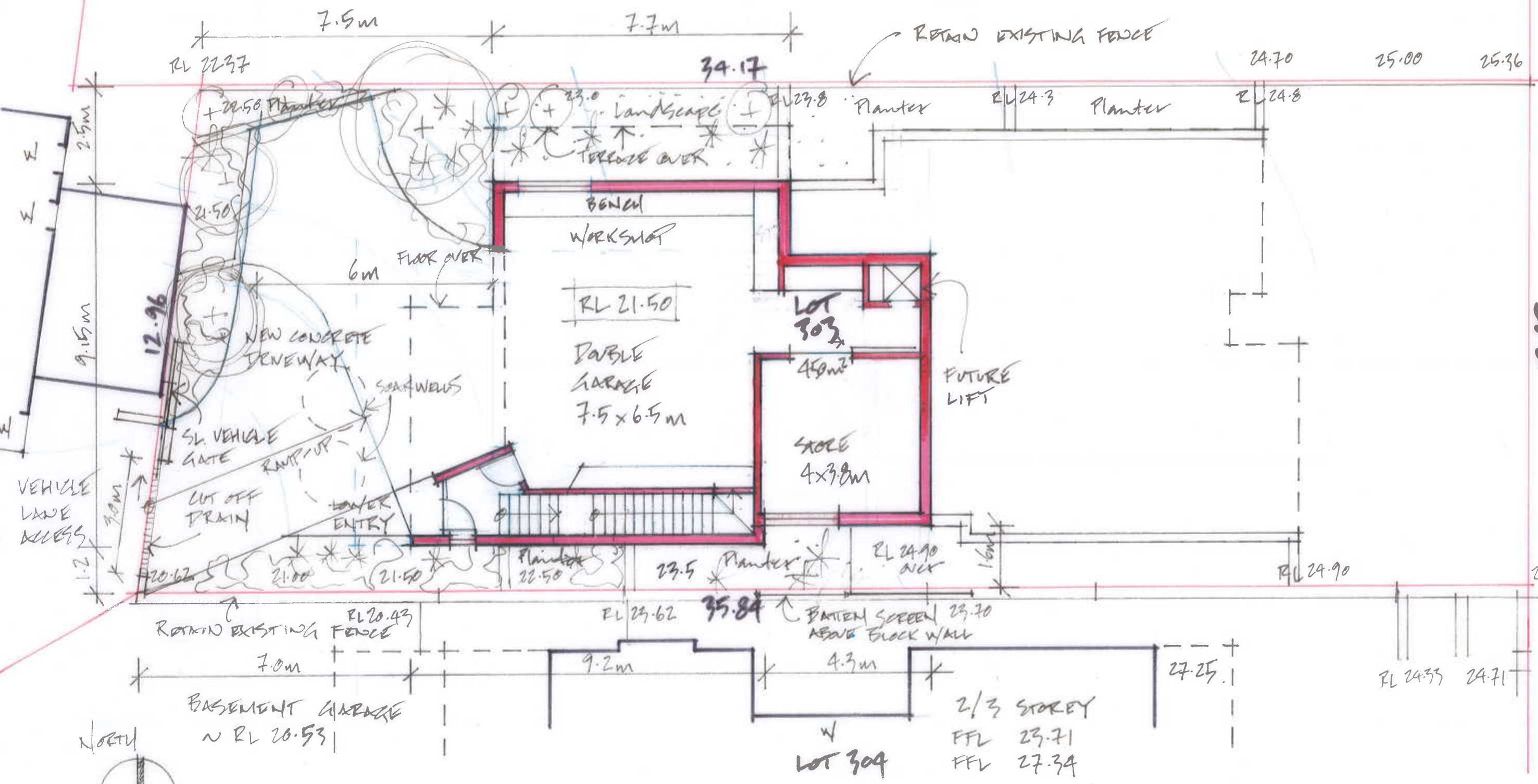


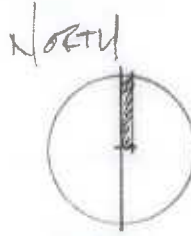
CAR PARKING



FFV. 25.91
3 STOREY



12.85
VERGE TO STATION RD



AREA - 97.5m L.G.F.
LOWER GROUND
1:100 @ A3

73B STATION RD
EAST FREMANTLE

2/3 STOREY
FFL 23.71
FFL 27.34

REV B

COVISION
SB DESIGN
SKOZ 22.2.22

CAR PARK

LOT 1709 2/3 STOREY

34.17

3x SKYLIGHTS
FIXED.

↑ 2° Pitch

← gutter

14x
SOLAR PANELS

↑ 2° Pitch

ALL ROOFS -
WIDE TRAY 'COLORBOND' METAL ROOF SHEETING

LOT 303
450m²

↓ 7.5° Pitch

↓ 7.5° Pitch

12.96

12.85
VERGE TO STATON ROAD

LANE
ACCESS

OVERSHADOWING
SHOWN HATCHED

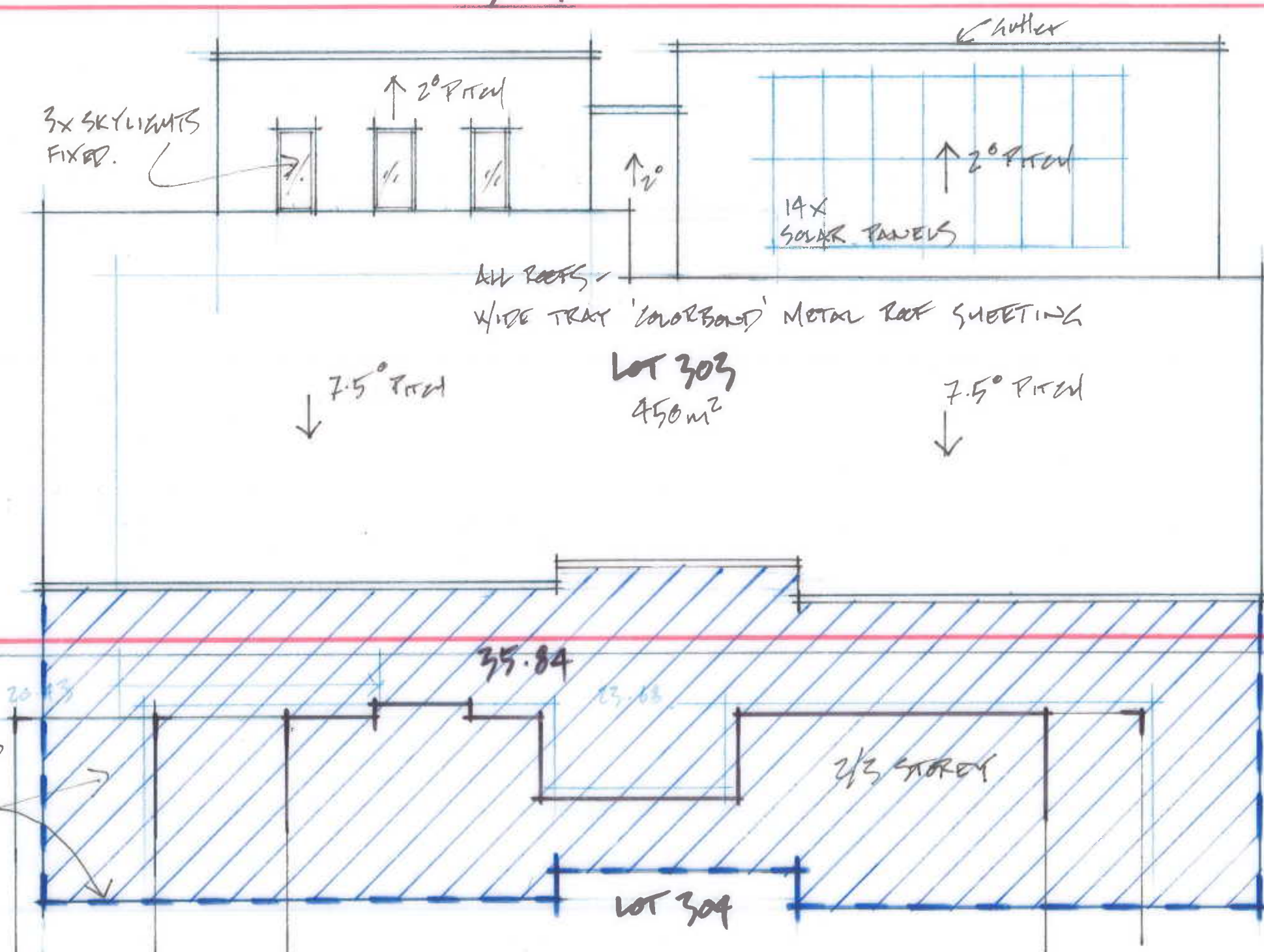
OVERSHADOWING
132m² ~ 26%
Lot 304 - 510m²

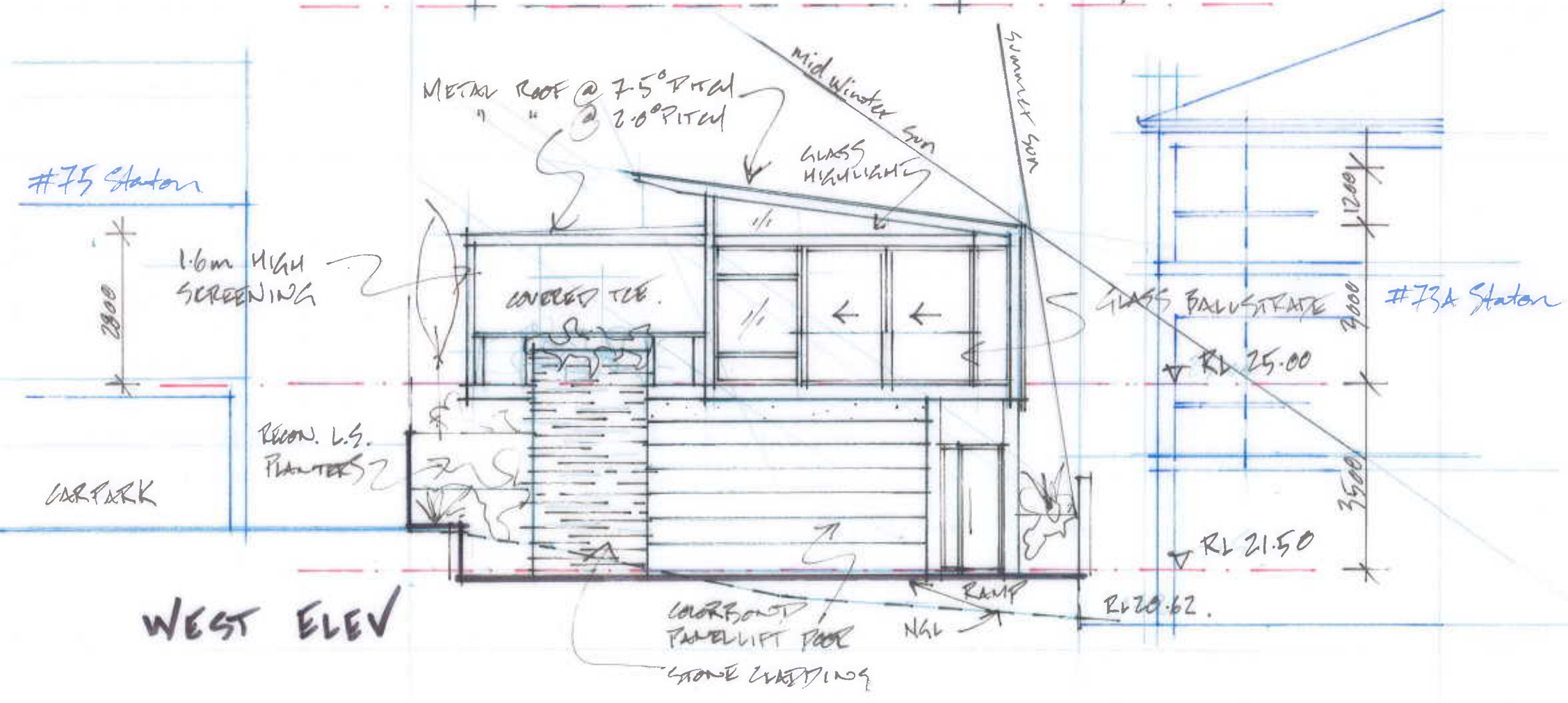
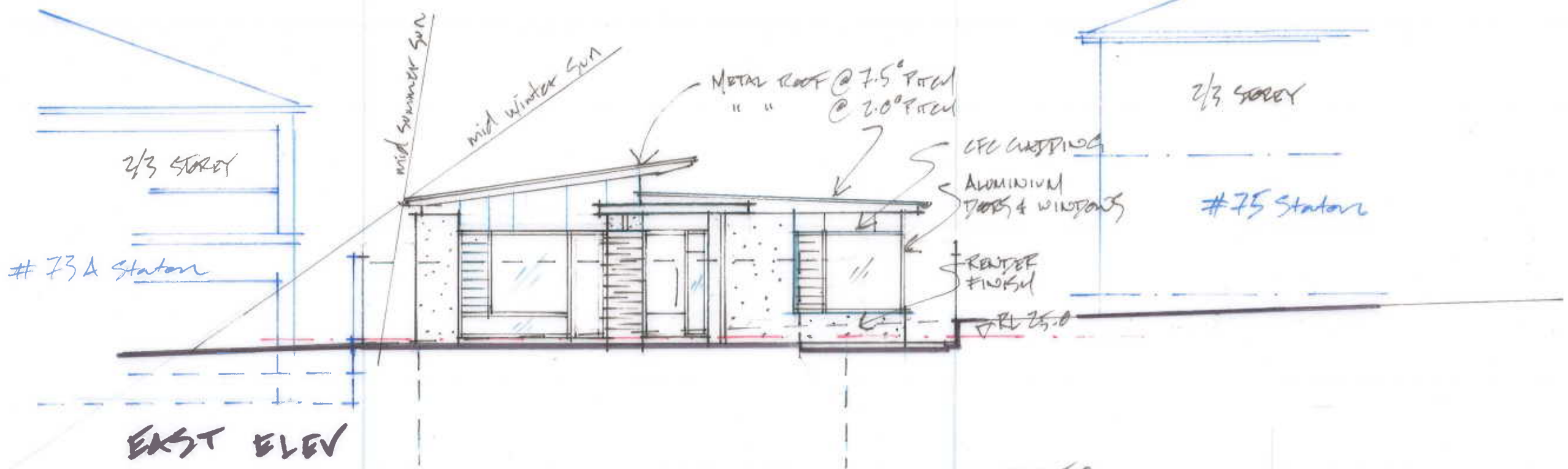


ROOF PLAN
1:100 @ A3

73B STATON RD.
EAST FREMANTLE

ECOVISION
SB DESIGN
REV A SK03 22.2.22

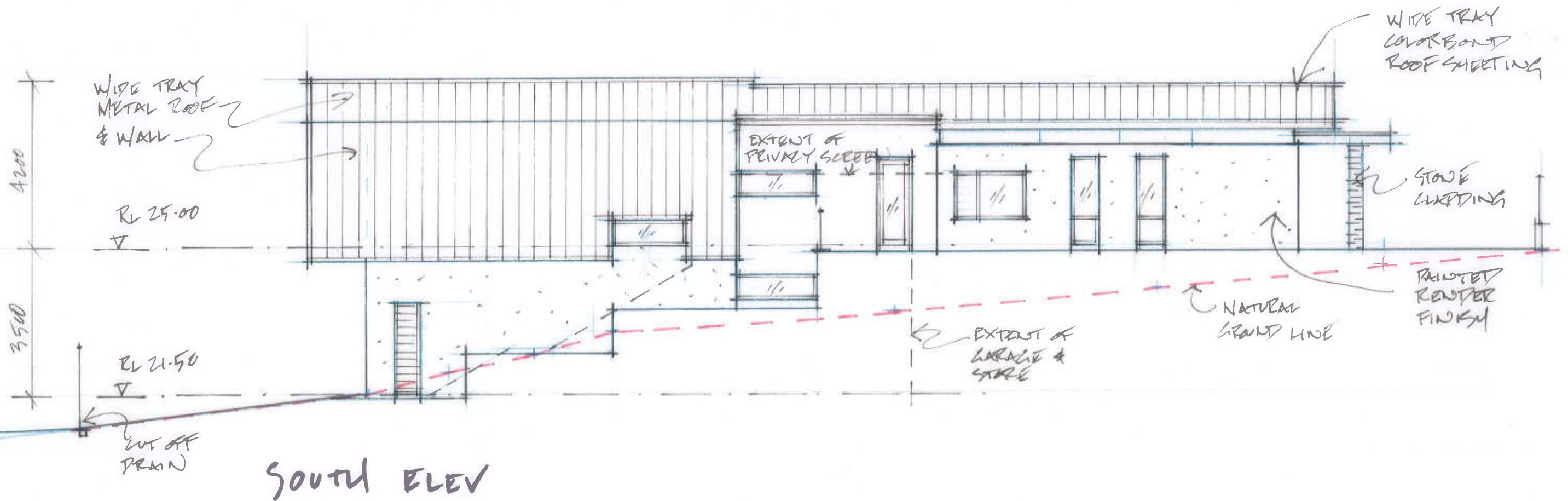
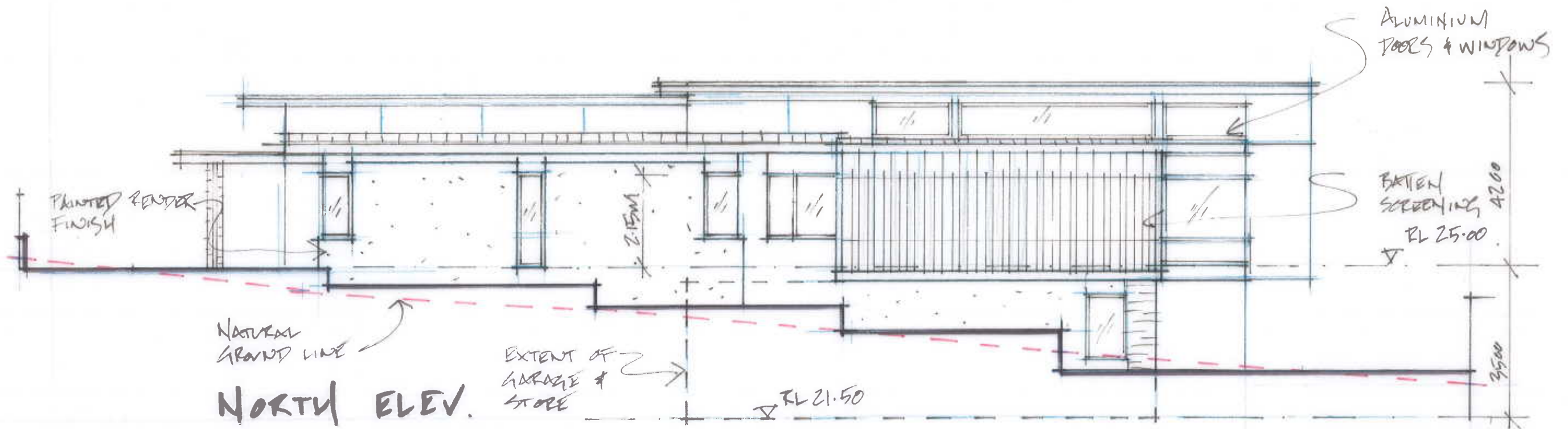




ELEVATIONS
1:100 @ A3

73B STATION RP
EAST FREMANTLE

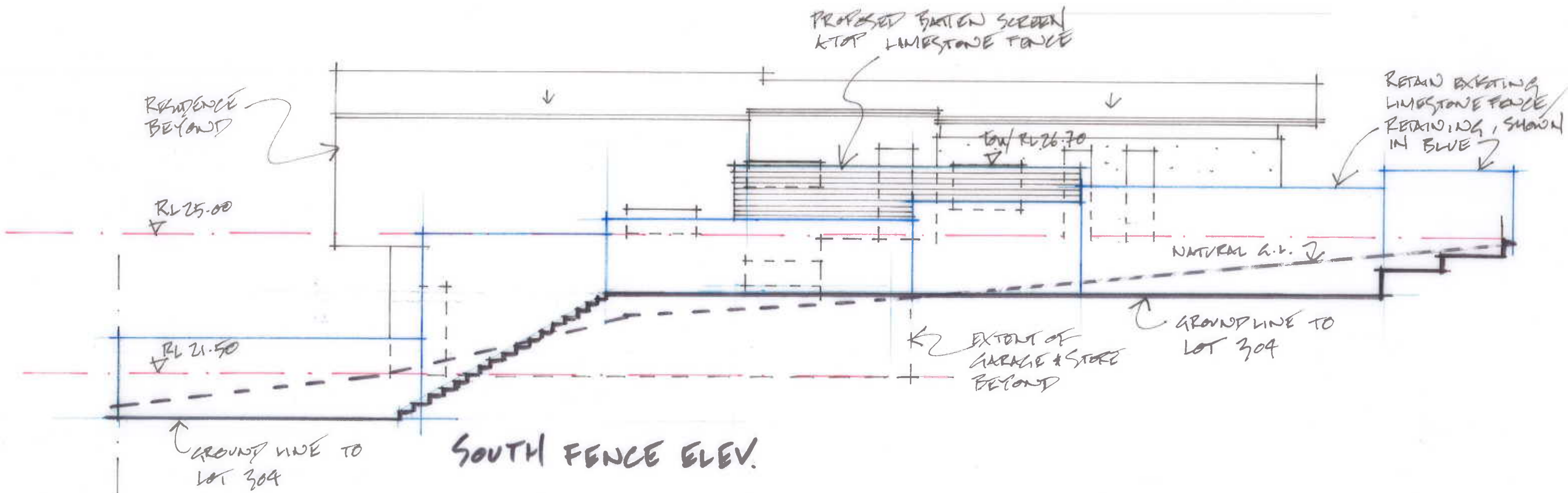
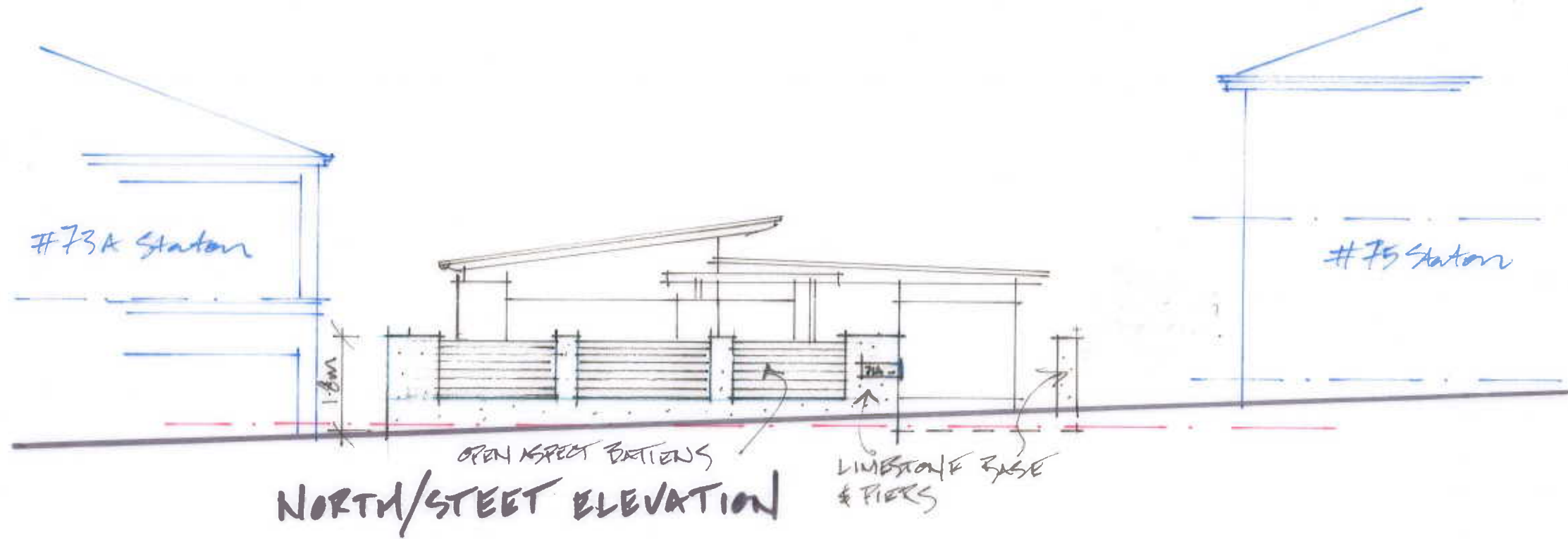
ecovision
SB DESIGN
REV B_SK04 22.7.22



ELEVATIONS
1:100 @ A3

73B STATION RD
EAST FREMANTLE

ecovision
SB DESIGN
REV B SK05 22.2.22



FENCE ELEVATIONS
1:100 @ A3

73B STATION RD.
EAST FREMANTLE

ecovision
SB DESIGN
REV A SKob 22.2.22