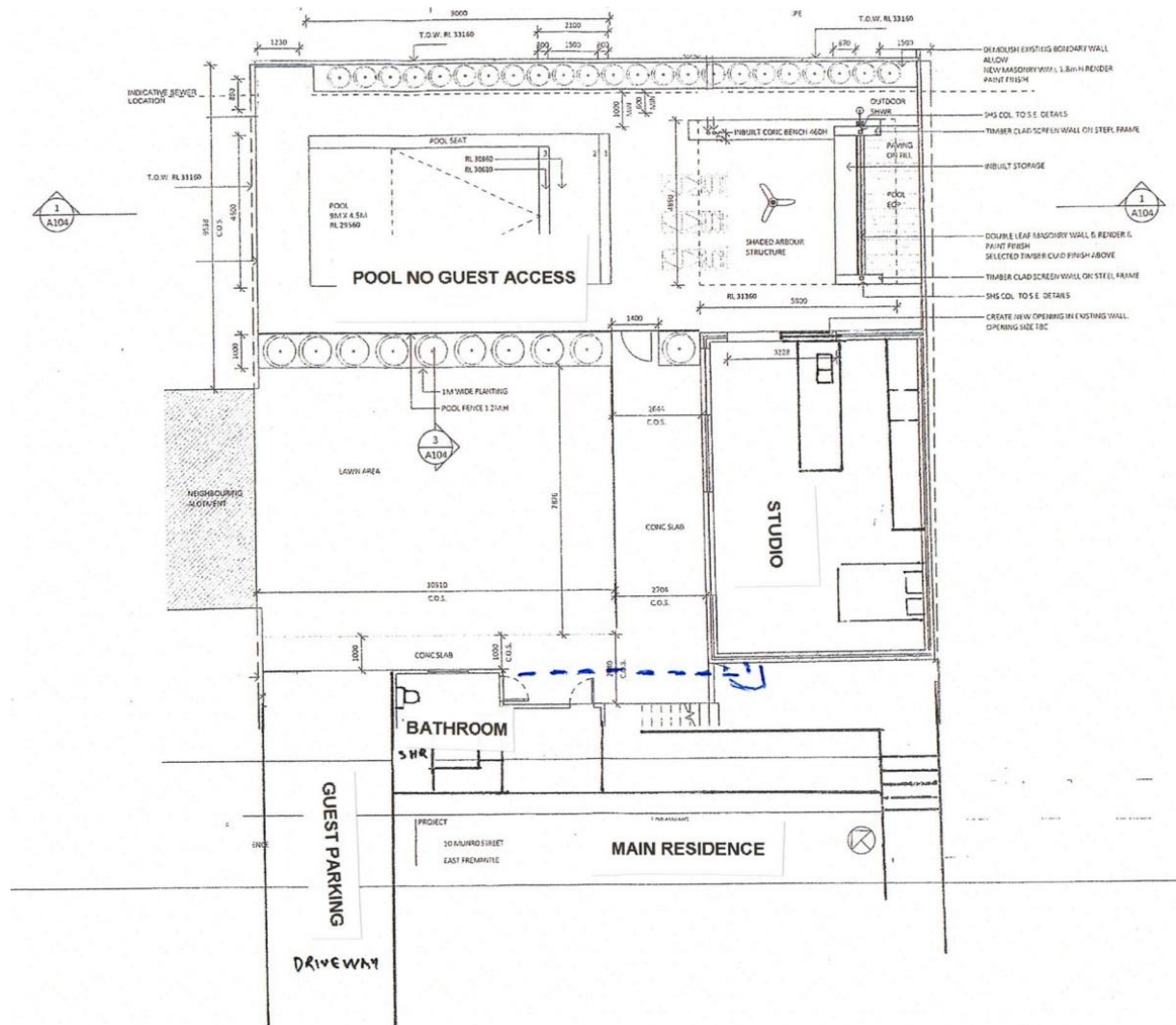


# EVACUATION PLAN

See below diagram floor plan outlining evacuation process.



**Step 1:** In case of fire evaluate the situation, and if you believe safe to do so use the provided fire extinguisher or blanket to try to put out the fire.

**Step 2:** If you deem the fire to be out of control exit the building immediately via either the single door or large glass sliding doors.

**Step 3:** Once you and companion are in a safe proximity of the building phone 000 immediately and request Fire services.

**Step 4:** Contact Property Manager Anna Hanson on 0404 355 403 and update her of situation.

**Step 5:** Exit the property via the side gate and driveway to ensure you are safe from smoke inhalation and wait for ambulance to arrive.