

Local Artist Exhibition



TOWN of
EAST FREMANTLE



Exhibition of Local Art

at East Fremantle's George Street Festival
Sunday 25 November 2018 - 11am to 6pm

Under cover at 65a George Street

For one day only on Gorgeous George St



Local Artist Exhibition



Camilla Loveridge

Camilla is an arts worker at DADAA in Fremantle. She has exhibited locally, interstate and internationally. "Constant Presence" commenced as a balga resin pour, beautiful in itself and suggestive of new growth. The bitumen, though also beautiful, has different connotations - that of death. An iconic chalice (the Early Christian Ardagh Chalice) is inscribed into the visceral red resin which, in an anagogical sense, signifies the "sacrificial blood" of Christ. The deliberate marks describing this vessel work to maintain and contain, and suggest Christ's constant presence. Yet, this visceral substance will ooze beyond all confines, heralding Christ's love and offering of hope for all humanity.

Pieces in this exhibition: A & B (3 items)

George Howlett

George was born in East Fremantle, so he's a truly local artist!

He holds an Advanced Diploma in Visual Arts and has enjoyed install internships, mentorship, major exhibitions and neon installations over the past five years since gaining his accreditation.

Fantastically for George he was too busy with other works and shows to submit an exhibit.

For one day only on Gorgeous George St



Local Artist Exhibition

A ~ Constant Presence



an example of George's work



For one day only on Gorgeous George St



Local Artist Exhibition



Joss Gregson

Joss is a prominent WA artist and a popular tutor at Fremantle Arts Centre. Joss' sensitive landscapes and sophisticated botanical work have been collected by Bankwest, Curtin University and Galerie Dusseldorf.

Joss's classes at Fremantle Arts Centre are a comprehensive introduction to painting methodology, understanding colour and enjoying the journey between a blank canvas and a finished work. The artist holds a BA, and two graduate diplomas in the fine arts.

Pieces in this exhibition: D & E

Ken Rasmussen

Ken decided to become an artist at the age of fifteen. After attending art school, he has lived and worked as a professional artist his whole life. Ken paints from his studio in East Fremantle under the watchful eye of his cat Bonkers. He produces highly textured oil paintings which are layered and carved. Ken says sometimes he feels equal parts painter and sculptor. For Ken, art is a grand adventure. He's inviting you to join him. Here are the familiar places you love. Through the artist's eyes you'll see them filled with majesty, mystery and fun.

The two pieces on display were created especially for display at today's event.

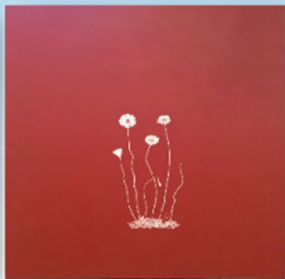
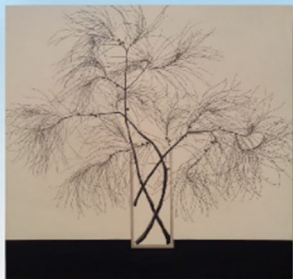
Pieces in this exhibition: F & G

For one day only on Gorgeous George St



Local Artist Exhibition

D & E ~ "She-Oak" & "Everlastings II"



F & G ~ "East Fremantle Sparkle" & "Rottneest Journey"



For one day only on Gorgeous George St



Local Artist Exhibition



Leith Jansen

Leith is a local fine artist who exhibits at Gunyulgup Galleries.

Pieces in this exhibition: 4

Janis Heston

Janis's piece is a celebration of the power of fire on the earth. Fire has always been the means of transforming clay from earth into an immutable material of function and beauty. These simple forms are the canvas to showcase the beauty of fire in that process. They are coated with many layers of Terra Sigillata which is a very fine particle liquid clay slip. Each layer is then burnished to build up a lustrous surface which enhances the effects achieved by the by the firing process. They are fired at low temperature to maintain porosity and allow the smoke to penetrate the surface. The pieces are fired in individual containers with various materials and minerals to obtain smoky effects. After firing the pieces are waxed and polished.

Pieces in this exhibition: 1

For one day only on Gorgeous George St



Local Artist Exhibition

an example of Leith's work



an example of Janice's work



For one day only on Gorgeous George St



Local Artist Exhibition



Marcus Beilby

Marcus is acclaimed as one of Australia's finest contemporary realist painters. Marcus has celebrated local, national and international exhibitions of his work since 1975. He has travelled and studied art movements around the world, always returning to the colours and subjects of his local environment.

The universal success and popularity of his work is because it speaks the common language of realism. From his painstakingly detailed painting of Queen Elizabeth II opening parliament to the simple powerful lines of an underground carpark – Marcus' talent for capturing and reflecting life and people in such historically valid detail is unrivalled.

Pieces in this exhibition: J

Olga Cironis

Olga is an Australian artist of Czech/Greek descent, she examines notions of belonging, cultural globalisation, appropriated histories and accepted attitudes on belonging in the Australian cultural and social landscape.

By engaging viewers to become part of her work, Olga questions the meaning of public and private space, gender and social norms that permeate our accepted actions.

Pieces in this exhibition: K

For one day only on Gorgeous George St



Local Artist Exhibition

J ~ "Vacancies"



an example of Olga's work



For one day only on Gorgeous George St



Local Artist Exhibition



Pam Jones

Pam studied Metal Jewellery at Claremont School of Art 1979 and has had an ongoing practice since then, working in her own East Fremantle studio. She has exhibited at Gallery East in North Fremantle, DADA Gallery, East Fremantle, and is represented in the Art Gallery of WA.

Her jewellery is available in Gunyulgup Gallery in Yallingup. In the exhibited body of work she uses marine and plant forms cast in Sterling Silver together with freshwater pearls for earrings, brooches and neckpieces.

Pieces in this exhibition: L

Perdita Phillips

Perdita is a contemporary artist with a wide-ranging and experimental conceptual practice. Whilst materially diverse, underlying themes of ecological processes and a commitment to re-sensitisation to the physical environment, are apparent. Things to help birds and people (the Ocean) was part of an exhibition called Antipodean Encounters: WA Artists and Taiwanese Culture where artists and Taiwanese expatriate women living in WA shared their stories about home and longing. *"One of my responses was to think about the seas that were flown over each time the women were able to visit home and the parallel journey made every year by migratory wader birds."*

Pieces in this exhibition: M

For one day only on Gorgeous George St



Local Artist Exhibition

an example of Pam's work



M ~ "Things to help birds and people
(the Ocean)"



For one day only on Gorgeous George St



Local Artist Exhibition



Tony Jones

Tony is a West Australian artist working predominantly as a sculptor across a wide range of mediums and ideas. His artistic vision encompasses and combines cultural and political issues, local history, maritime and aeronautical imagery as well as themes from the personal and the imagined. His sculptures have been based on an expression of personal and public concerns, anxieties, hopes and aspirations, drawing on common symbols and myths as a way of making contemporary connections. It has been a search for forms and narratives, gestures and contexts that transcend any one incident or time. This is often done without resort to the language of abstraction.

Pieces in this exhibition: N, O & P

Richmond Primary School

Every year the Western Australian Local Government Association (WALGA) invites local communities to enter one of the State's largest single community arts projects, Banners in the Terrace, by designing a banner to represent their local government area.

In 2018 the Town of East Fremantle submitted an entry for the very first time – students from Richmond Primary School created the inaugural design. Following its display on St Georges Terrace, Perth and here at East Fremantle's George Street Festival the banner will be gifted to the school.

Pieces in this exhibition: Q

For one day only on Gorgeous George St



Local Artist Exhibition

N ~ "This Big"



Q ~ "Banner in the Terrace 2018"



For one day only on Gorgeous George St



Local Artist Exhibition



Dawn Meader

Dawn is passionate about helping people connect with their hearts and true self through painting and drawing.

Her own paintings come from the deepest place in her heart and often she is guided to paint an inner experience ~ she uses art as a way of expressing her dreams and visions from meditations.

Pieces in this exhibition: R

Hubble Street Mural

When Patricia Burvill originally painted the wall on Hubble Street she captured the essence of the great community vibe. She said *"Back then George Street was not as hip as it is today but as I lived on Hubble Street it definitely had a wonderful sense of community. As a child I spent many many hours fishing and prawning under the old Fremantle bridge and now enjoy the cafe strip on George Street and my kids love the park."*

The new mural, to replace the badly deteriorated original, was commissioned by the Town of East Fremantle in October 2018. Artist, Jarrad Martyn, chose to explore early settler life in East Fremantle. *"Imagine, if you will, the self-sufficiency of that time – catching fish, gathering produce, machinery modification, working in the slaughterhouse once located here in the centre of Plympton."*

For one day only on Gorgeous George St



Local Artist Exhibition

an example of Dawn's work



First Hubble Street Mural ~ Patricia Burvill



Head along to Hubble to see the new one!

For one day only on Gorgeous George St



Local Artist Exhibition

Community Art Piece

The Baha'i Community Junior Youth Group brainstormed the Town's proposal of a local group creating a community art piece at the Festival.

They were excited to have the opportunity to present an educational piece for the betterment of the community. They decided that as a group they would learn more about recycling to give them more insight and inspiration for their design.

The resulting idea was a flat earth image of countries and oceans covered with all of the items that we can recycle. The group researched the places in the world with the most amount of waste with the vision that this could be depicted in their art piece.

The group are also looking forward to talking with people about recycling and waste throughout the day.

Visit them on the corner of Hubble Street

For one day only on Gorgeous George St