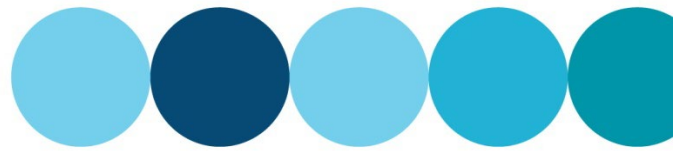


Upcoming work

April -June 2020



At the time of sending this to you, the below information is correct. However this may change as Government advice on COVID19 is issued daily. We are monitoring the global and local health situation daily and adjusting our business operations and policies as needed.

Water Corporation will soon begin work to install equipment to improve water network management in your area. This equipment is designed to measure the pressure and flow of water through the pipe network. It will allow us to understand water use at a more local level. This information will help us to detect leaks and breaks in the pipe network more quickly and reduce the need for emergency repair work.

We know it's a challenging time for all, but we do need to continue with planned maintenance and upgrades to our infrastructure. We need to do this to ensure we are able to provide essential water, drainage and wastewater management services now, and in the future.



Where is this happening?

Water Corporation is planning to install additional equipment in locations along the water network in the suburbs of East Fremantle, North Fremantle, Willagee, Bicton, O'Connor, Hilton, Hamilton Hill, Beaconsfield, Palmyra, Melville, Coolbellup and Samson to help us better monitor and manage water use in the area. **One or more of these locations is near your property. Please refer to the map over the page.**

This equipment will be installed underground, accessible by a small cover at ground level. A bollard will also be installed for identification and protection (See image opposite).

Following installation of this equipment the area around it will be reinstated to City standards.

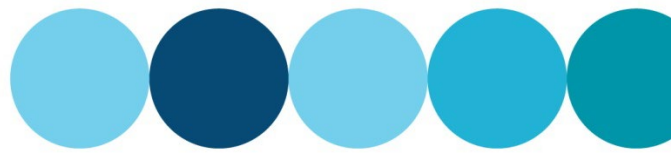
What is happening?

Preliminary work will take place at all sites within the fortnight beginning **30 March 2020**. The work will be carried out using a vacuum excavator mounted on the back of a truck and a support crew. They will be present at each site for up to 6 hours. Marker pipes will be left in position at suitable locations until construction is complete.

Excavation and other construction by a small construction crew will then take place between May and June 2020 for up to 6 days at each location.

All work will take place on weekdays between the hours of **7am and 5pm**. Our authorised contractor, Civcon, will undertake this work on behalf of Water Corporation.





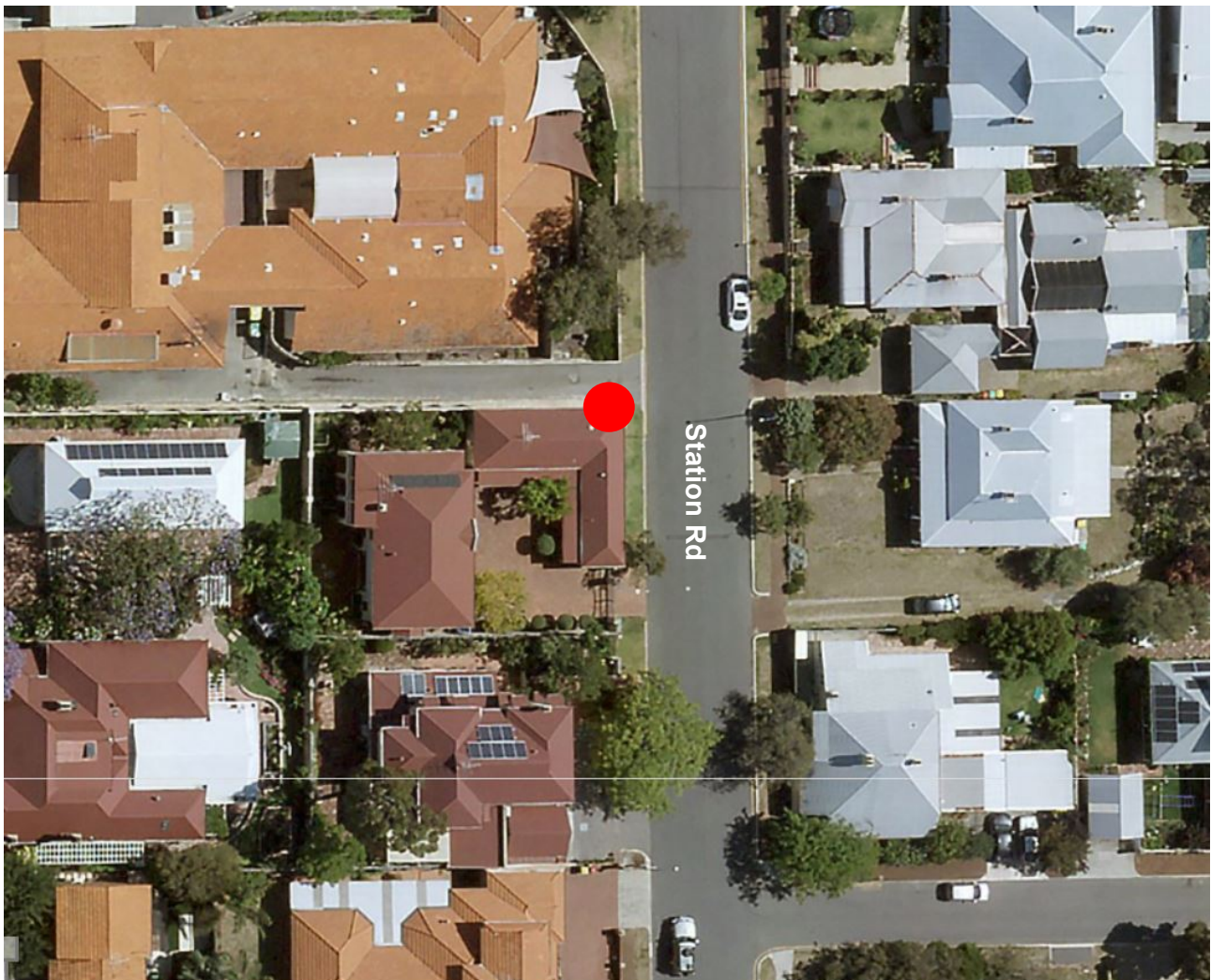
What are the impacts?

This work may generate some noise and dust, so we recommend keeping your windows and doors closed when the crews are working.

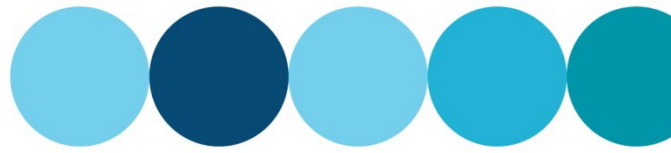
We are monitoring the global and local health situation daily and adjusting our business operations and policies as needed. We understand our work does cause inconvenience and we will work together with you to minimise these impacts as much as possible.

Who can I contact?

For any questions or concerns related to the work, please contact Community Engagement Advisor (Water Corporation) Sarah Bennett on 9240 2587 (business hours) or email pressure.management@watercorporation.com.au.



Melville High Level North DMA - French Rd



Location of new water monitoring equipment