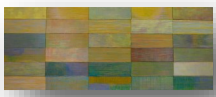


# About our Artists



**Angela** is a WA based artist and curator. From a formal frame of reference, Angela's work is reductive and explores, shape, structure and space. From a conceptual viewpoint it presents ideas related to cognition, systems, signs, rules, measurement and language. It frequently incorporates sequencing and repetition and uses the inherent meaning in materials to mediate ideas.

**Anna** creates bespoke jewellery in Sterling and Fine Silver using techniques such as forging, forming, casting, keum boo and plique a jour enamelling. Her jewellery often features freshwater pearls and cabochon stones such as Australian opals. Anna also enjoys making wearable sculptures of cast objects from nature.

**Camilla** draws and paints with oils, charcoal, graphite and wax in a process-driven praxis, inspired by engagement with materials and processes. She is currently preparing her candidacy for PhD in Visual Arts and has exhibited in significant art prizes in Perth and regional WA, as well as interstate and overseas. Camilla has received awards for her work, and is represented in public and private collections within Australia. Currently Camilla is an arts worker at DADAA Fremantle, mentoring adults who live with disability.

**Dawn** is passionate about helping people connect with their hearts and true self through painting and drawing.

**Jody** Scott, a textile artist for over 30 years, worked with all 335 students at Richmond Primary School to create a collage of East Fremantle's amazing river views. Everyone contributed to produce a 'pixelated' artwork which was transformed into digital pixels with the aid of a local photographer.

**Joss's** everlastings come from a group of plants known as Ephemerals, because of their fleeting nature. Yet when picked and dried they are everlasting, a conundrum. The painting perhaps is also a conundrum, in that the red earth is painted and the plants are the gessoed ground.

**Ken** is a successful West Australian impressionist landscape artist who lives and works in East Fremantle.

**Michael** has been experimenting with organic forms that he creates intuitively, usually with ceramics. He is trying not to represent anything figurative, taking a more surrealist approach. Somehow sensual curves are soothing to create and provide a calm, meditative space. Michael rarely carves wood but came across a log of curly Jarrah and thought the interesting grain would highlight an abstract shape.

**Olga** has collected, folded, stacked and stored blankets in her studio for years. This fascination is linked to an ongoing questioning of the past, discarded histories, customs, and traditions, forgotten until reclaimed by the blanket's new role in her work. Olga constantly questions whether she wants to reclaim history, if history is worth reclaiming and how much of it is just subjective narrative? Does history explain why we are here, who we are and why we do the things we do to each ..... Paola Anselmi (Art Writer)

**Pam** works in her East Fremantle studio to create her jewellery. She works mainly in Sterling silver and uses precious and semi-precious stones and often plastic to add colour to her pieces. Her latest pieces are geometric and have silver elements that have been cast.

**Patricia** is a specialist arts teacher who grew up in East Fremantle.

**Peter** lives in nearby South Fremantle and is an artist of merit.

**Ruth** grew up in East Fremantle in an artistic household, introduced to art at an early age. Her mother, Camilla, became her mentor and taught her the skills to become an artist. Recently graduating from Curtin University with a degree in Fine Arts, Ruth intends on pursuing a career in teaching, whilst continuing to draw and develop her artistic nature.

**Sally's** art practise includes sculpture, painting and textiles and is concerned with the Australian landscape and culture. Her sculptural work has been exploring forms using recycled 'rabbit proof' and 'dingo proof' fence. Mapuru Journey references a trip to Arnhem land to engage with the basket weavers in Mapuru and continues her use of painting on a number of recycled boards to create a composition.

**Susie** lives in North Fremantle and most of her paintings and small sculptures reflect her love of the local landscape, The River, Port, Wharf and local industrial scenes. She likes to alternate between painting, small sculptures and small found object assemblages with a narrative - mostly from beach wash ups.

**Tony's** Bluebird is from a series of small abstracted sculptures that use found/scrap steel to create figurative objects that each tell their own story. His Sails painting was developed using printers inks, stencils and a roller to pick up the colours and draw the image. The subject matter reflects his interest and passion for all things nautical and maritime.

*The images of works pictured left are not in a particular order, please refer to the artworks & their individual information card*